

# iSeq 100

Sequencing System

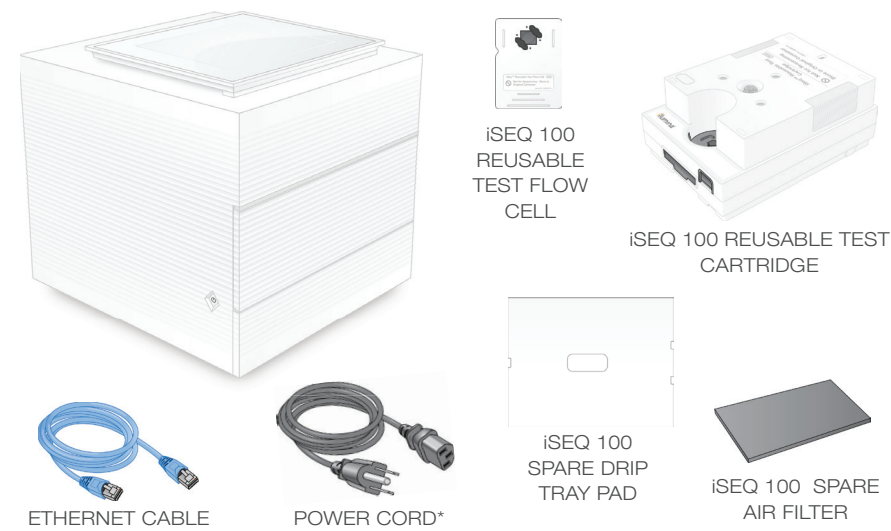
## Setup Poster

This poster describes how to install and set up the iSeq™ 100 Sequencing System.

For additional documentation, training, safety information, and other resources, visit:

[support.illumina.com/iSeq100](http://support.illumina.com/iSeq100)

### 1 Confirm Box Contents

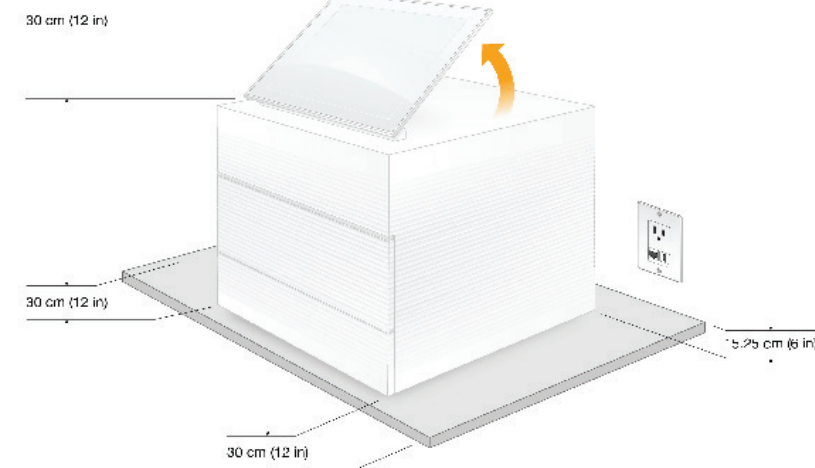


Set aside the reusable test flow cell and cartridge for first time setup (step 6) and any future troubleshooting.

Store the reusable test flow cell and cartridge, spare drip tray pad, and spare air filter in the original packaging at room temperature.

\*Plug configuration might vary.

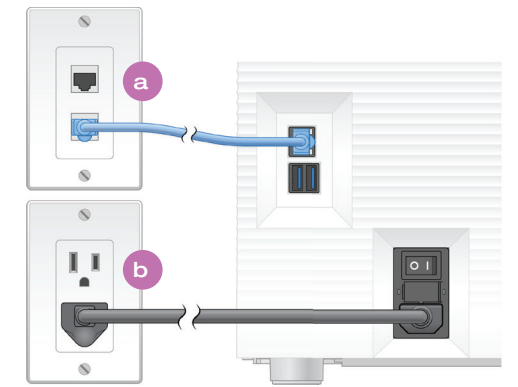
### 2 Place on Lab Bench and Raise Monitor



The brown shipping box weighs 21 kg (47 lbs), and the instrument weighs 16 kg (35 lbs). Both require a two-person lift.

Place the instrument on a level lab bench (see pictured minimum clearances) with access to a power outlet. Lift the monitor from the top of the instrument so that it stands upright.

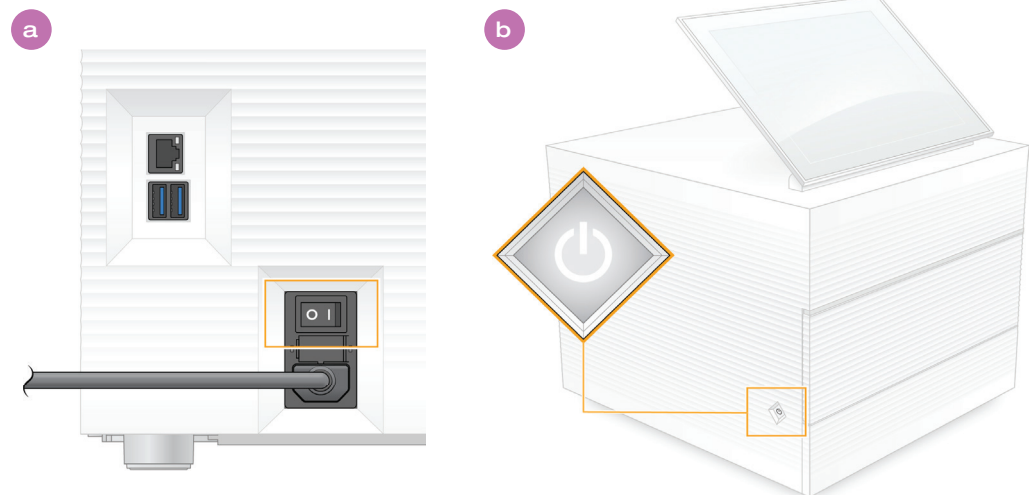
### 3 Connect the System



**a** To configure the iSeq 100 System for a wired network connection, connect the Ethernet cable to an Ethernet port.

**b** Connect the power cord to the AC power inlet on the rear panel, and then to a wall outlet.

### 4 Turn Toggle Switch and Press Power Button



**a** Turn the toggle switch on the back of the instrument to the power on (I) position.

**b** When the power button on the left side of the instrument pulses, press it to turn on the control computer and operating system.

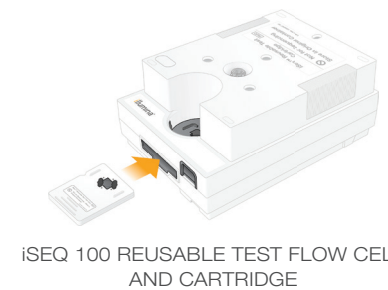
### 5 Reset Both Default Passwords



**a** Record the default password for **sbsadmin** that is displayed on the orange screen. Log on with the default password, reset the default password (minimum 10 characters), and continue to follow the prompts.

**b** Record the default password for **sbsuser** that is displayed on the blue screen. Select the sbsuser account from the left corner, and then log on with the default password. The status bar glows green and the Setup screen appears.

### 6 Perform First Time Setup



Select **Setup** and follow the onscreen prompts to perform a system check and configure the system.

For the system check, insert the reusable test flow cell into the slot on the front of the reusable test cartridge until it clicks. Make sure that the labels face up.

After use, store at room temperature in the original packaging.

### Warnings

To prevent electrical shock do not remove the outer panels from the instrument. There are no user serviceable components inside.

Visually inspect the power cord. The power cord must be in good working condition when using this device.

Only when the system is unplugged from AC mains is all hazardous energy removed from the system.

For technical assistance, contact Illumina Technical Support.

Website: [www.illumina.com](http://www.illumina.com)

Email: [techsupport@illumina.com](mailto:techsupport@illumina.com)

Telephone (North America):

+1.800.809.4566

Telephone (Outside North America):

+1.858.202.4566



[www.illumina.com/iseq100](http://www.illumina.com/iseq100)

For Research Use Only. Not for use in diagnostic procedures.

illumina®