

Installation Notes

MiSeq Operating Software 1.0.40

For MiSeqDxTM Instruments

Introduction

This document explains how to update the MiSeq Operating Software on the MiSeqDx instrument to MiSeq Operating Software 1.0.40.

For a complete description of features contained in this software, refer to the Release Notes.

Before you begin:

1. This procedure takes approximately 10 minutes.
2. This procedure requires Administrator access and login privileges.
3. This procedure requires transfer of an executable installer to the MiSeqDx PC, either over an Internet connection or using a USB key to transfer the installer.
4. This procedure is easier with a mouse and keyboard connected to the USB ports of the MiSeqDx.
5. This procedure overwrites the MiSeq Operating Software configuration file (MiSeqSoftware.Options.cfg). If any customizations have been made to this file, they need to be restored.
6. Complete all sequencing runs or analysis before starting this procedure.
7. Direct any questions to Illumina Technical Support at techsupport@illumina.com.

Instructions

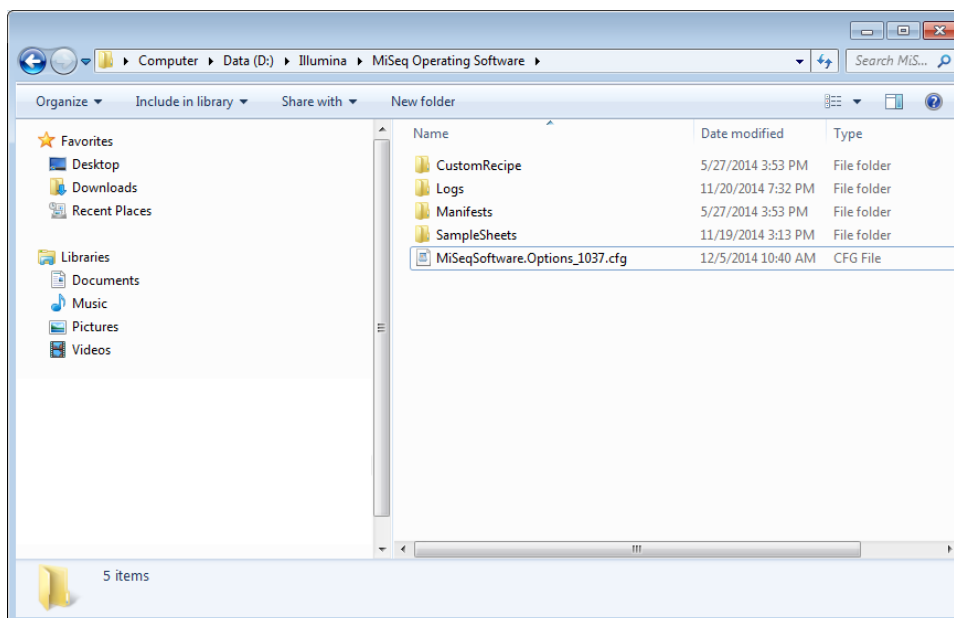
1. Ensure that all sequencing runs and analysis are complete.
2. Record the current MiSeq Operating Software configuration.
 - a. Navigate to the Home screen in MiSeq Operating Software and select the Run Options button



b. Select the Folder Settings tab.

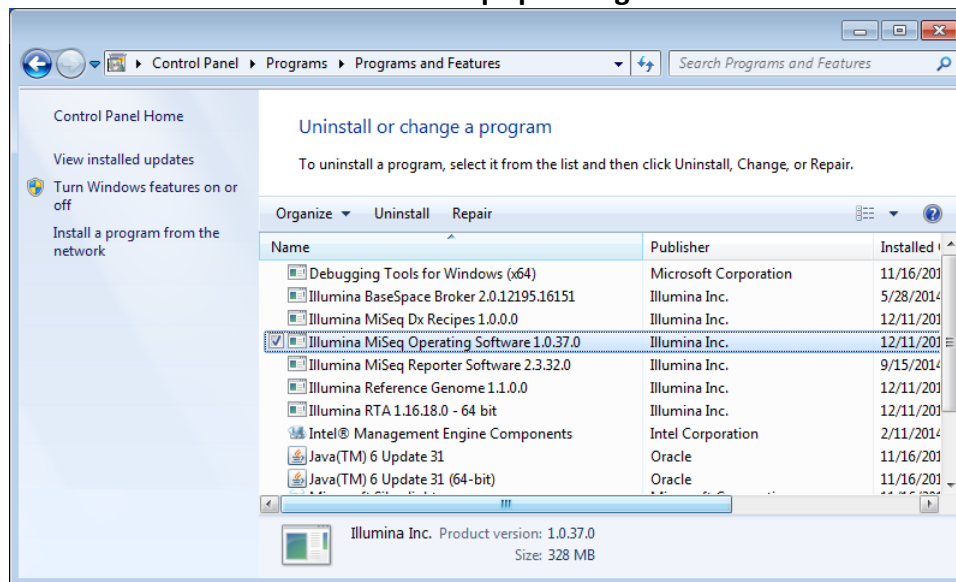
- c. Record the path to the User Database File. This path needs to be entered after the software is upgraded.
- d. Record any folder paths that are different from the default paths shown above. These folder paths need to be entered after the software is upgraded.
- e. Select **Cancel** to return to the Home screen.
3. Minimize MiSeq Operating Software to access the Windows desktop.
 - a. If MiSeq Operating Software is in Windowed mode, minimize using the button in the top-right corner of the window.
 - b. If MiSeq Operating Software is in Kiosk mode, select **Manage Instrument**, then **Minimize to Windows**.
4. When the Windows desktop is visible, close MiSeq Operating Software.
 - a. Right-click the MiSeq Operating Software taskbar icon at the bottom of the screen and select **Close Window**.
5. Make a backup of the MiSeq Operating Software configuration file.
 - a. Navigate to D:\Illumina\MiSeq Operating Software.

- b. Select MiSeqSoftware.Options.cfg and rename to MiSeqSoftware.Options_1037.cfg.



6. Download the MiSeq Operating Software 1.0.40 installer to the desktop.
 - a. The installer can be found at www.support.illumina.com/downloads/miseq-operating-software-v1-0-40-0-installer-15033871.html
 - b. If the MiSeqDx is not connected to the internet, the installer can be downloaded on another computer and transferred to the MiSeqDx by local network or by USB key.
7. Uninstall MiSeq Operating Software 1.0.37.
 - a. Under the Windows Start menu in the lower-left corner of the screen, select **Control Panel**, then **Programs and Features**.

b. Locate and select **Illumina MiSeq Operating Software 1.0.37.0**.



c. Select **Uninstall**, then select **Yes**.

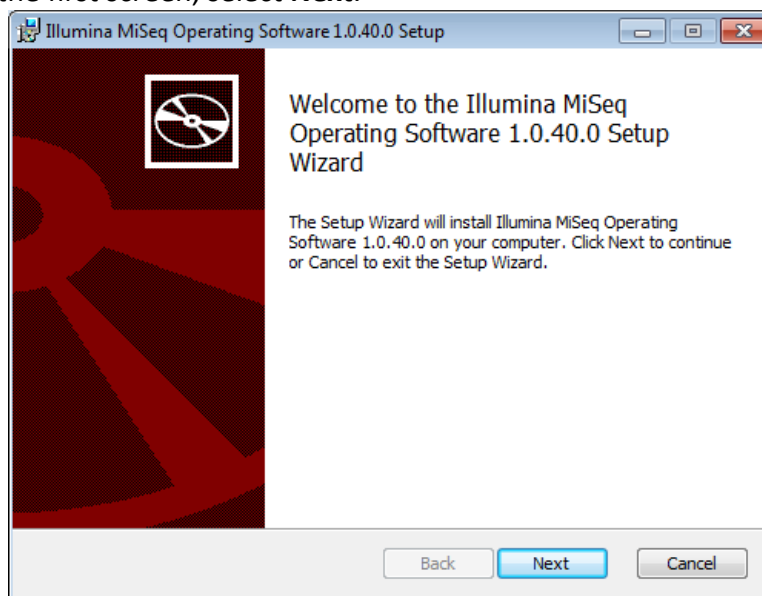
d. Close the Programs and Features control panel.

8. Install MiSeq Operating Software 1.0.40.

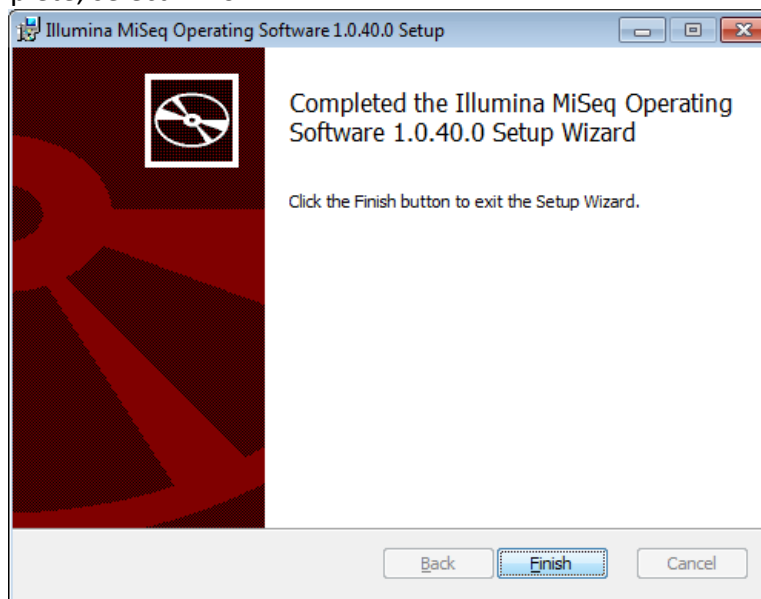
a. Navigate to the MiSeq Operating Software 1.0.40 installer (MiSeqInstaller.msi) on the desktop.

b. Double-click the installer.

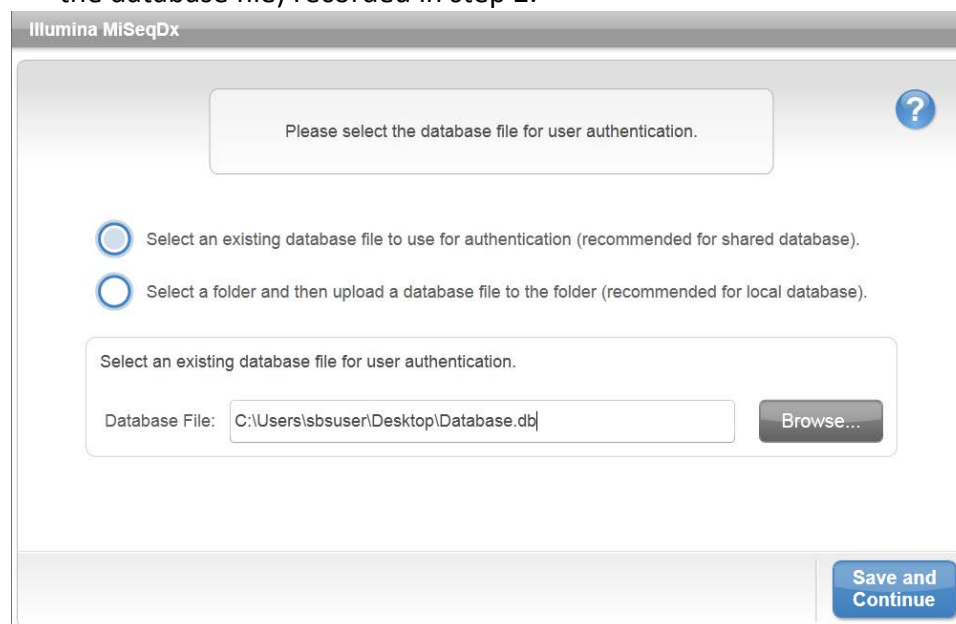
c. At the first screen, select **Next**.



- d. The installer installs the MiSeq Operating Software. After installation is complete, select **Finish**.



9. Configure MiSeq Operating Software 1.0.40.
 - a. Launch MiSeq Operating Software using the shortcut on the desktop.
 - b. At the Database setup screen, select the option **Select an existing database file to use for authentication**, then enter the path to the database file (or browse to the database file) recorded in step 2.



- c. Select **Save and Continue**.
- d. The MiSeqDx instrument begins initialization, which typically takes about 3 minutes.

- e. From the Folder setup screen, change any path to match the paths recorded in step 2.
- f. Select **Save and Continue**.
- g. From the login screen, enter the Administrator user name and password, and then select **Next**.

Illumina MiSeqDX

Enter your user name and password.

User Name:

Password:

If you do not have an account, please contact your facility administrator.

Back Next

- h. Confirm that all paths are correct, and then select **Save and Continue**.

Illumina MiSeqDX admin LOG OFF

Please make any needed changes to the Folders.

Recipe Folder: Browse...

Sample Sheet Folder: Browse...

Manifest Folder: Browse...

Output Folder: Browse...

User Database File: Browse...

Changing the user database file will require you to log in again.

Save and Continue

10. Confirm installation.

- a. From the Home screen, select the question mark button in the upper-right corner.



- b. Select the **About** option.
- c. In the About window, confirm that MiSeq Operating Software is listed as version 1.0.40.



MiSeq™ Operating Software

Version: 1.0.40
Build Date: 10/23/2014 2:17:48 PM

- d. If MiSeq Operating Software is not listed as version 1.0.40, contact Illumina Technical Support.
11. Remove the installer from the MiSeqDx computer.
- a. Minimize MiSeq Operating Software to the Windows desktop.
 - b. Quit MiSeq Operating Software by closing the window.
 - c. Locate the MiSeqInstaller.msi file and delete it.
 - d. Start MiSeq Operating Software using the shortcut on the desktop.
 - e. MiSeq Operating Software initializes the instrument.
12. Fill out the MiSeq Operating Software 1.0.40 Installation Verification Form (attached to PCN0115) and return it to illumina@illumina.com.